

SKY'S ADOBE

PULSE

High Rise Towers - (Gated Community)

2&3 BHK Apartments at Anantapur



A world class luxury apartment which is a perfect mix of innovative technology with nature. Located at NH44, a stone throw away from Anantapur city center. A home that opens its windows to a lush green vista, Yet not far from important places and things. You buy a home at Skys Adobe Pulse which is promising fresh air, ample natural light and a refreshed mind and soul for free!

* Architect Impression only

A Project by:

SKY'S ADOBE



*Position of amenities are indicative only.

Master Plan with Amenities

1. Sculpture Waterbody
2. Merry Go round
3. Slide
4. See-Saw
5. Swing
6. Wooden Swing
7. Climbing Dome
8. Toddlers Pool
9. Gazebo
10. Cricket Pitch (2 Nos.)

11. Reflexology Pathway
12. Fountain
13. Rope Climber
14. Tyre Swing
15. Tyre Tower
16. Rope Tunnel
17. Tyre Bridge
18. Tyre Dome
19. Barbeque Area
20. Rope Dome

21. Spring Board
22. Tyre Tunnel
23. Rope Tower
24. Gathering Area
25. Monkey Bar
26. Tyre Climber
27. Single Tennis Court
28. Slide
29. Combined Play Unit
30. Sand Pit

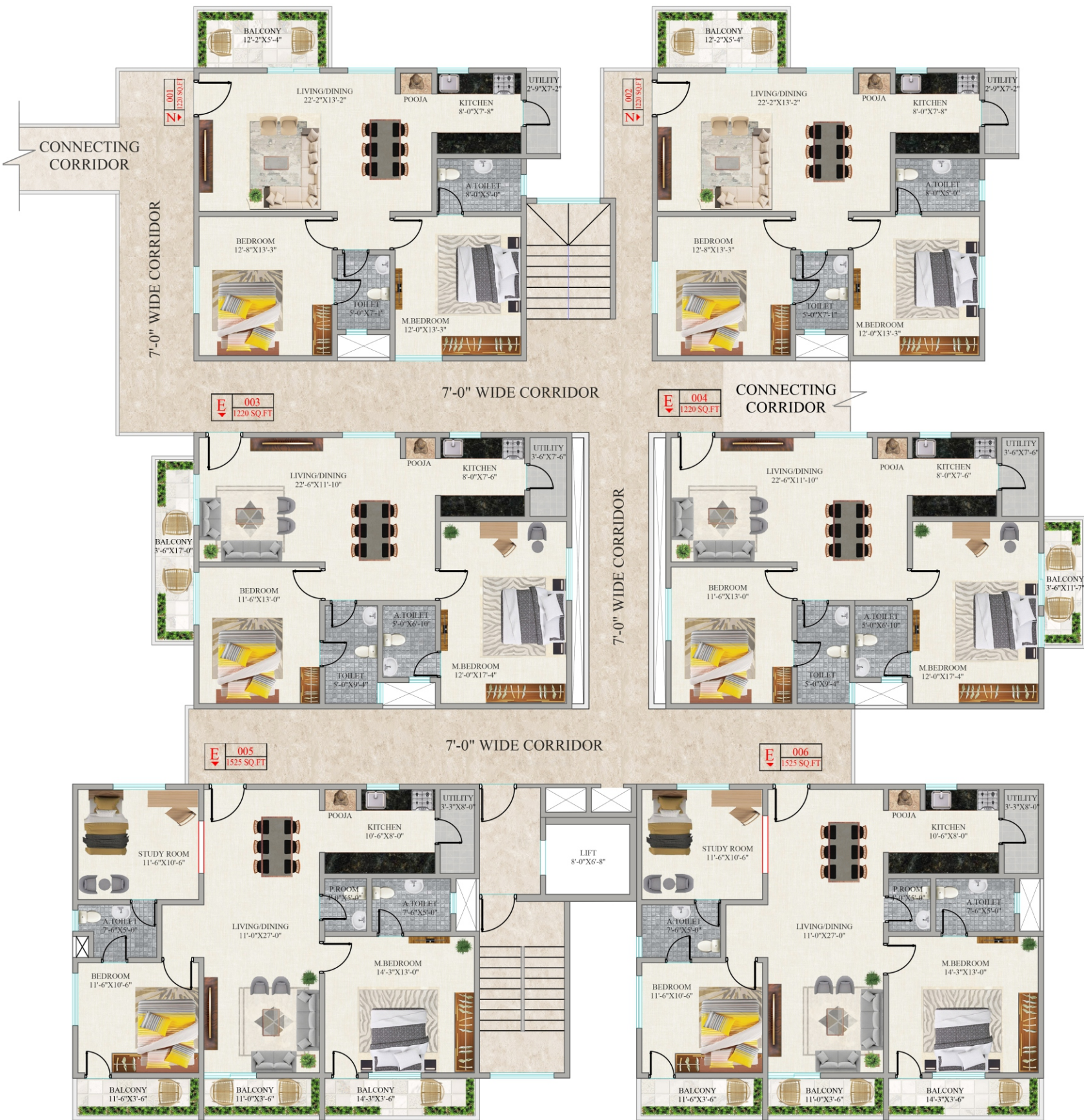
31. Sculpture
32. Water Body
33. Aroma Garden
34. Pergola Walkway
35. Kabaddi Court
36. Kho-Kho Court
37. Open Gym
38. Sculpture Garden
39. Meditation Area
40. Cultural Stage

41. Party Lawn
42. Volleyball Court
43. Stone Seating
44. Jogging Track
45. Yoga Deck
46. Koi Garden
47. Flower Garden
48. Pergola Seating
49. Ample Seats
50. Cycling Track

51. Ladies Swimming Pool
52. Gents Swimming Pool
53. Clubhouse
54. Half Basketball Court
55. Toddler's Football
56. Manual Bowling Alley
57. Skating Rink
58. Large Party Area
59. Pebble Garden
60. Outdoor Chess

61. Hammock Swing
62. Aerobics
63. Rock Climbing Wall
64. Berm
65. Labyrinth

Tower: B, D, F, H (6 Units Tower)

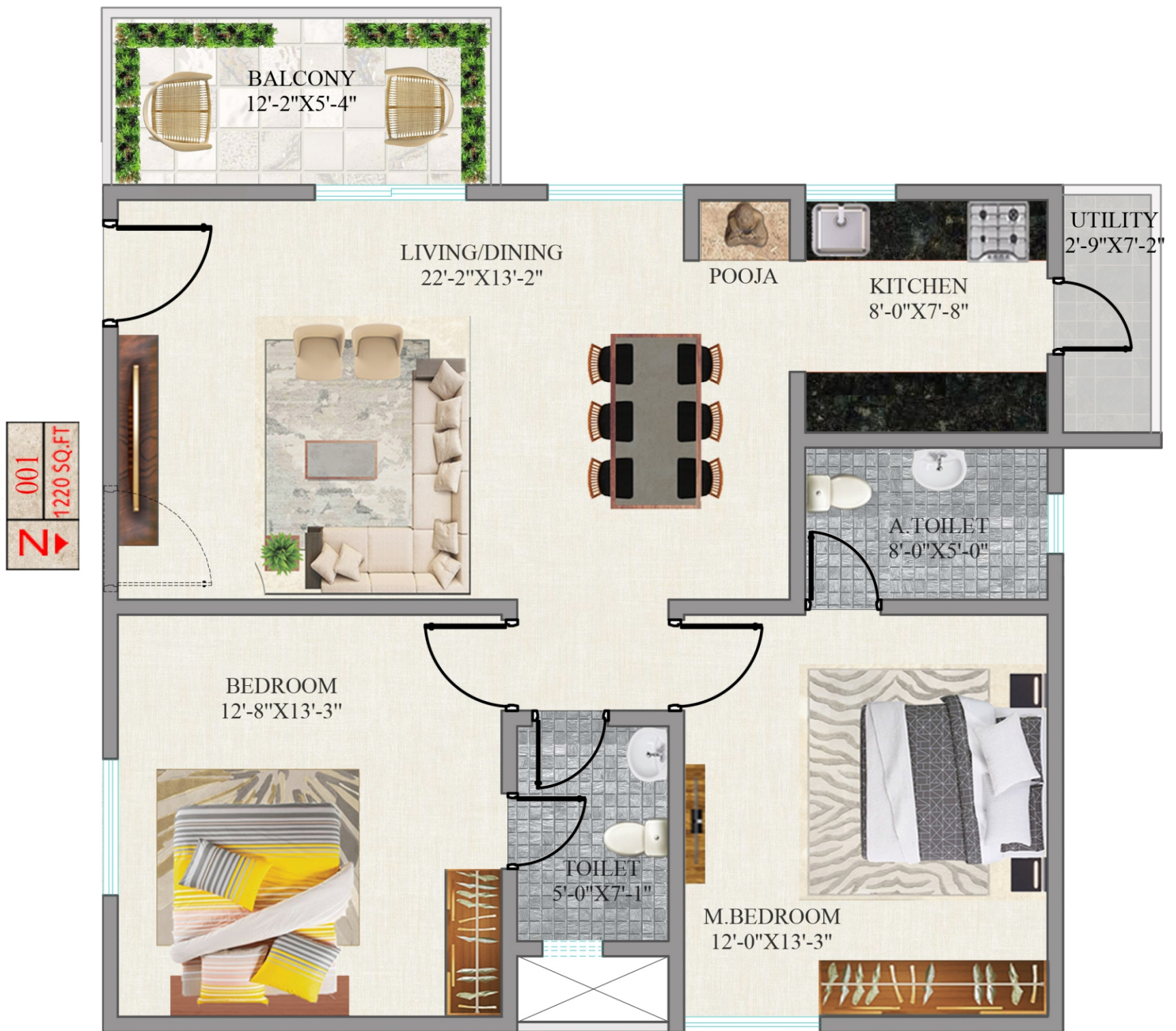


Tower: C, E, G (4 Units Tower)

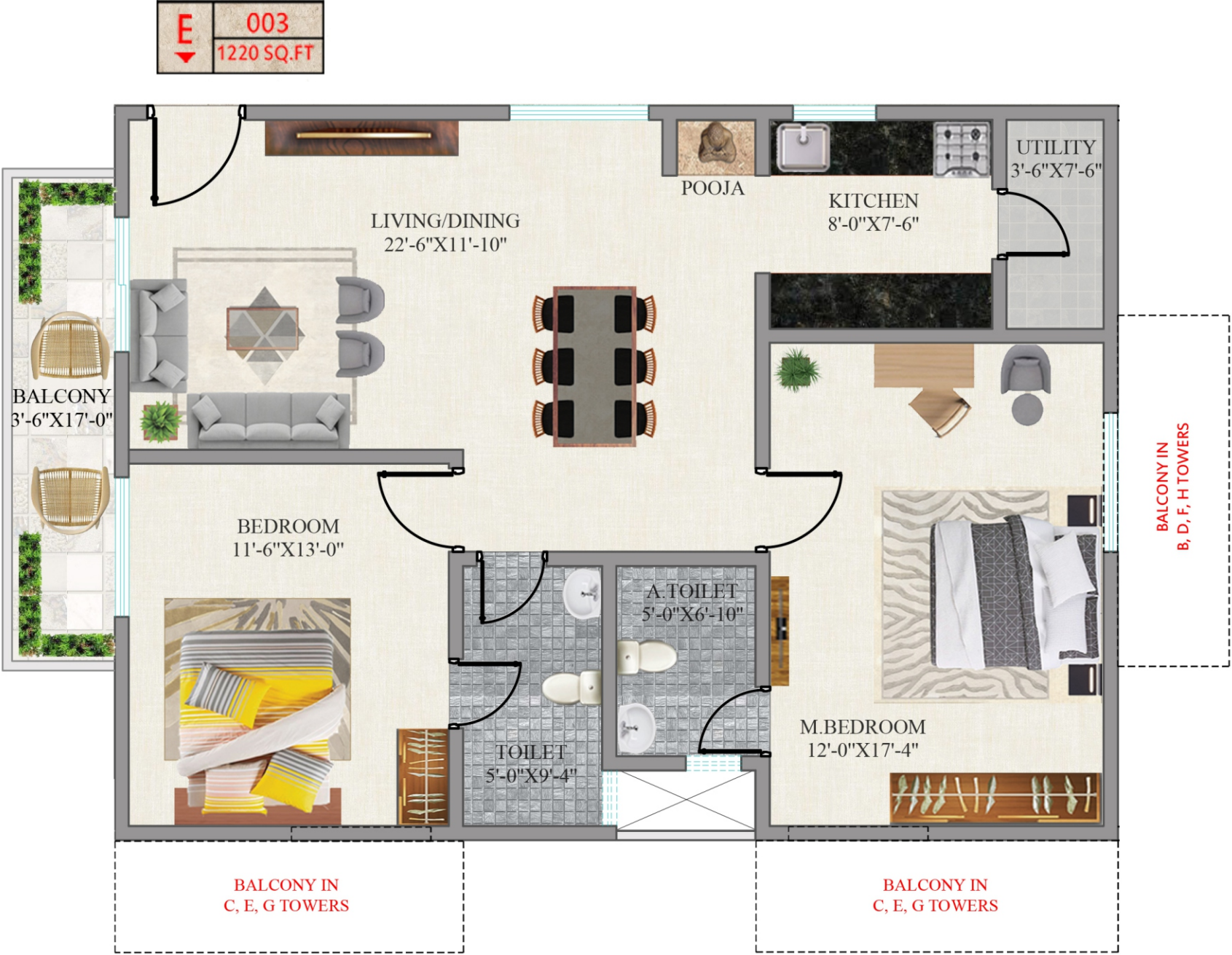


001, 002 - 4 Units Tower

001, 002 - 6 Units Tower



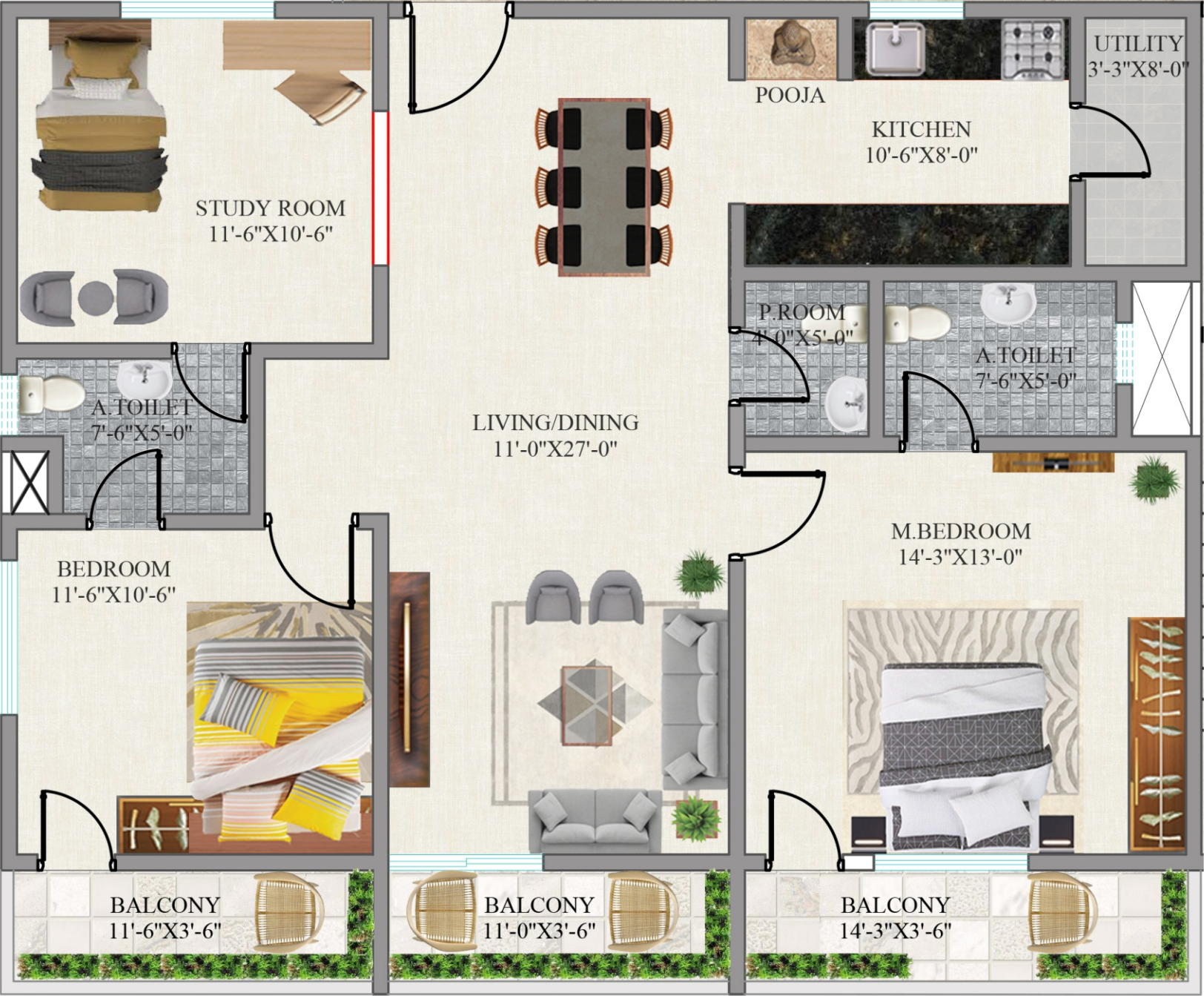
003, 004 - 4 Units Tower
003, 004 - 6 Units Tower



005, 006 – 6 Units Tower

E
↓

005
1525 SQ.FT



Best-in-Class Amenities



Jogging Track
Volleyball Court
Pergola Walkway

Wooden Seating
Aroma Garden
Open Gym



Merry Go Round
Climbing Tower

Sand Pit
Combined Play Unit



Open Gym
Barbeque Area

Cricket Pitch
Yoga Deck
Seating Area



Toddlers Pool
Spring Board

Wooden Swing
Climbing Dome
Tyre Swing



Cultural Stage
Meditation Area

Part lawn
Ample Seats



Rope Bridge
Rope Climber

Gathering Area
Monkey Bar
Rope Dome



Kho-Kho Court
Kabadi Court

Gazebo
Open Gym
Fountain



Jogging Track
Tyre Tunnel
Tyre Climber

Tyre Tower
Tyre Dome
Rope Tunnel



Gents Swimming Pool



Ladies & Kids Swimming Pool



Centralized Drinking Water Purifier Plant
(RO+UV)



Clubhouse

* Architect Impression only

And many more...

Key Specifications

DOORS

Main Door: Teak wood frame & shutter with teak finished membrane door/ galvanized steel doors and frames

All Other Doors: SAL wood frames with membrane panel doors / galvanized steel doors and frames

Godrej (or equivalent) locks

Concealed pivot or sleek circular hinges

Bottom of shutter and frame is coated with waterproof resin



TILES

ALL TILES

European design (or equivalent) with design combinations

BATHROOM

Floor- Slip resistance glazed ceramic tiles
Walls- Glazed ceramic tiles

BEDROOM, LIVING & KITCHEN

600mm x 600mm
Double charge vitrified tiles

BALCONY

Glazed ceramic tiles



ELECTRICAL FITTINGS

Child-safe

Schneider LIVIA series switches (or equivalent) built-in spark shield for added safety, Hum-free operation regulator

Double door closing system

Schneider (or equivalent) distribution boards

RCCB incomer for overload and earth leakage protection



PLUMBING (SANITARY AND WATER FIXTURES)

Hindware (or equivalent) water efficient CP sanitary fixtures and fittings

Futura (or equivalent) monolithic one piece kitchen sink

Jaguar (or equivalent) dual flush system

Soft close EWC seat cover with anti-bacterial coating



PAINT

Ceiling finished with oil bound distemper

External walls - Textured with external acrylic emulsion

Internal walls - Acrylic emulsion



FALSE CEILING BATHROOM

Grid false ceiling with PVC coated tiles with shadow channels in bathrooms



POWER BACK-UP

Power backup of 0.5 to 1 KVA in each apartment (sufficient for lights and fans)

Common areas - lights, fans, and utilities



RAW POWER

2 BHK Flat- 3KW
3 BHK flat - 4KW

Other Specifications



STRUCTURE

Seismic zone III-resistant:
RCC Framed Structure using solid concrete blocks for flat



UTILITY / SERVICES / LIFT

Dedicated sewage treatment plant
Dedicated organic waste converter
One service lift for each tower



RAILINGS

MS railings with enamel paint finish balcony and staircase



FIRE FIGHTING

Fire safety system provided as per government and local authority norms

Technology

SKYS ADOBE PLUS offers a robust and scalable framework that ensures integrated of multiple services and technologies



CABLE

Each apartment will be provided with a choice of cable operators.
No extra wiring required for the provided points



WI FI

WIFI service is provided at designated common and clubhouse areas



AV INTERCOM

All flats will be equipped with intercom service to enable inter- communication



SURVEILLANCE

IP based surveillance cameras can be connected for central monitoring



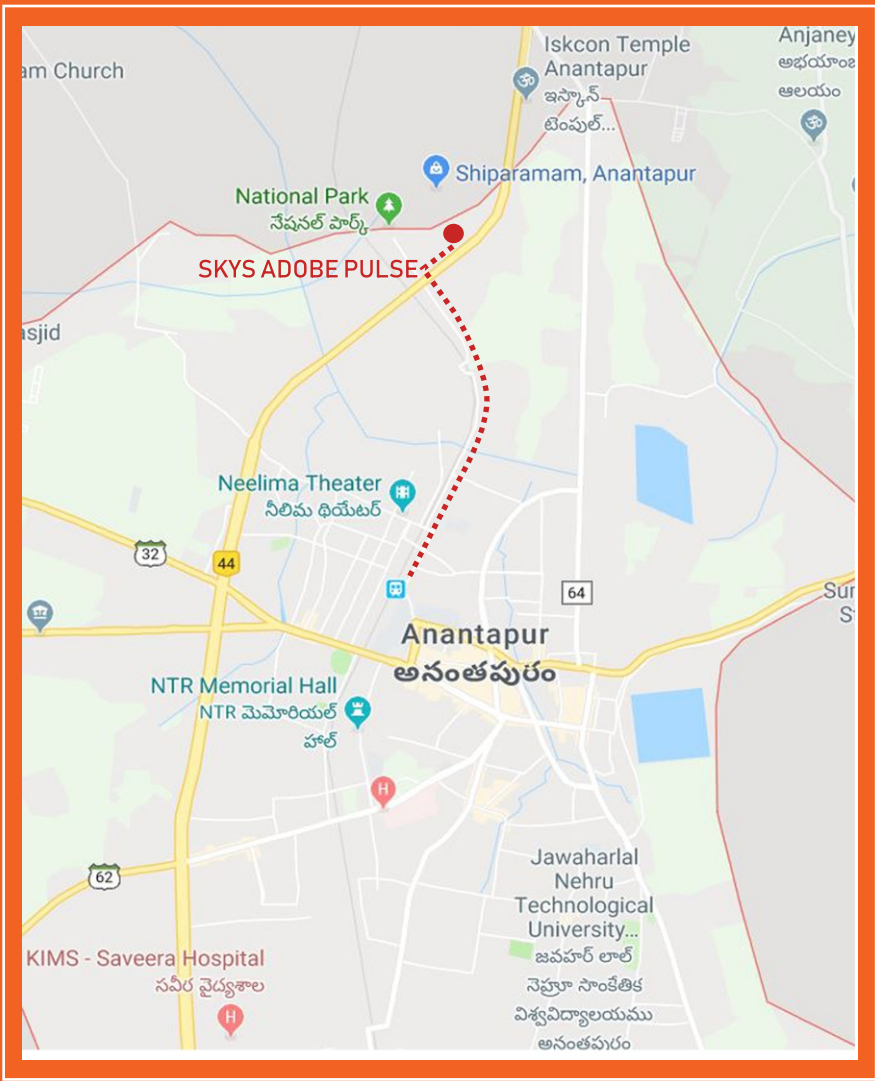
INTERNET

High speed internet access. Future bandwidth needs can also be taken care of with existing infrastructure



TELEPHONE

PSTN phone connections from different operators possible



Near By Places:

NH 44: Srinagar - Kanyakumari National Highway

- Shilparamam Handi Crafts – 200 mtrs
- National Park – 800 mtrs
- ISKCON Temple – 1.1 km
- Sri Sai College – 2.4 kms
- Vishal Mega Mart – 2.9 km
- Anantapur Railway Station– 3.2 kms
- Narayana College – 3.3 kms
- Delhi Public School – 3.3 kms
- Anantapur Bus Stand – 3.6 Kms
- D-Mart – 4 km
- Government Hospital – 6.7 Kms
- KIMS Saveera Hospital– 6.8 kms
- Jawaharlal Nehru Technological University– 6.8 kms
- Vidhyaniketan School – 6.9 kms

+ Factors

- Super Market
- Separate Swimming Pool for Women, Kids & Men
- Doctor's Clinic & Pharmacy
- Bank ATM
- Play School
- 100% Vaastu Compliance
- Best-in-Class amenities
- Automated Smart & Secured Access
- Main Entrance Gate
- Centralized Drinking Water Treatment Plant (RO+UV)
- Provision for Car Charging Point for each individual parking

8 Towers

- Spread across 3.5 acres
- 7 towers with G+9 floors each tower
- 2 BHK – 1220 sqft
- 3 BHK – 1525 sqft
- All units are North and East facing
- AHUDA approved
- RERA Approved Reg No. P12250141376

Experience

- 5+ completed projects
- Delivered 600+homes
- Completed construction area: 9,00,000 sqft
- Upcoming construction area: 5,00,000 sqft

For project details, please contact:
+91 888 444 59 69 | sales@skysadobe.com | www.skysadobe.com

Site Address:
SKYS ADOBE PULSE, NH 44, Bangalore Hyderabad Highway,
Near Premium Honda Car Showroom, Anantapur – 515004. Andhra Pradesh. India

Head Office Address:
SKYS ADOBE PLUS PVT. LTD., 4th Floor, No 9 & 10, 1st Main, Kempapura Main Road,
Beside Presidency College, Hebbal, Bangalore – 560024. Karnataka. India

Specifications and amenities mentioned in this brochure are only representational and informative. Information, images and visuals, drawings plans or sketches shown in this documents are only an architect's impression and are only indicative of the envisaged developments and the same are subject to approvals from local authorities. The developer reserves rights to make changes in design and offerings during construction.